

# BUILT BETTER



106-2480 Mt Lehman Road  
Abbotsford, BC | V2T 6W3  
Phone: (604) 855-6756

TF: 1-888-287-3333  
F: 1-877-855-5373  
info@jacksongrills.com

JPOP-05

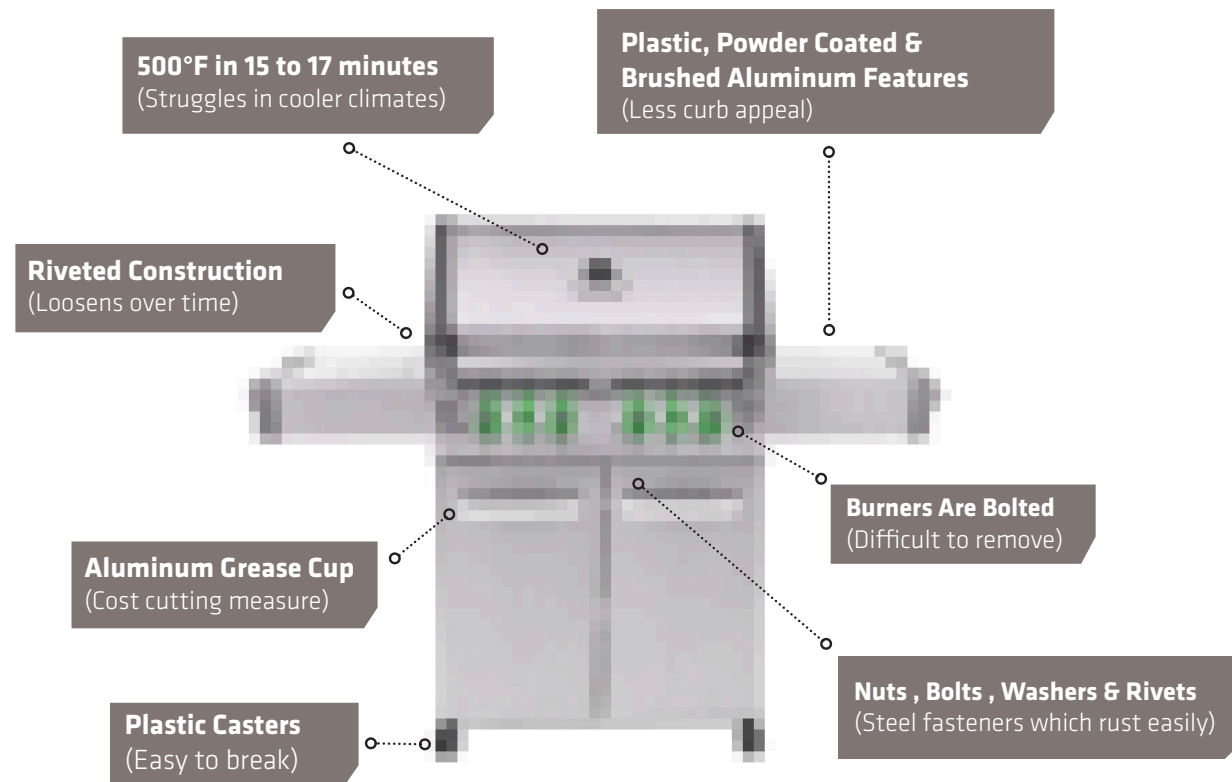




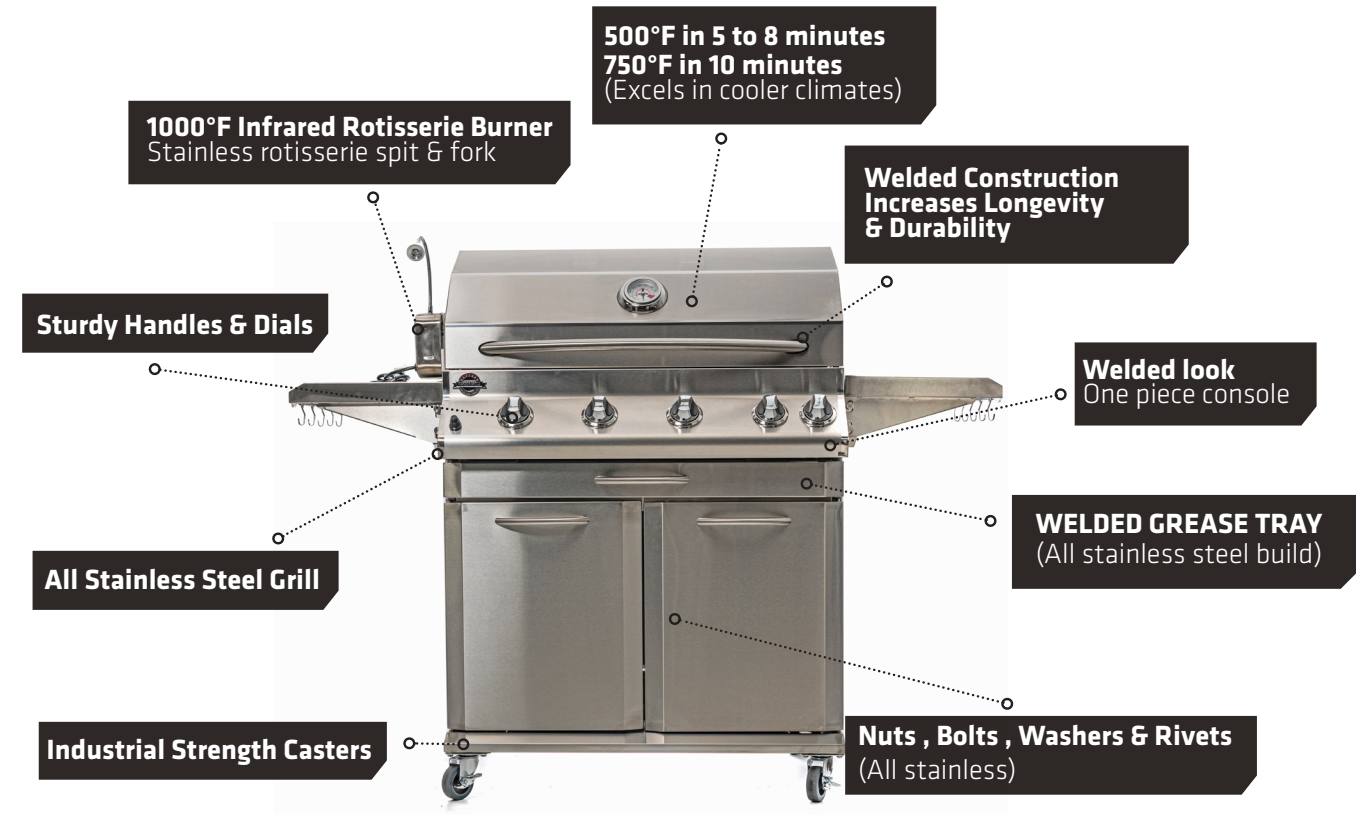
[jacksongrills.com/recipes](https://jacksongrills.com/recipes)



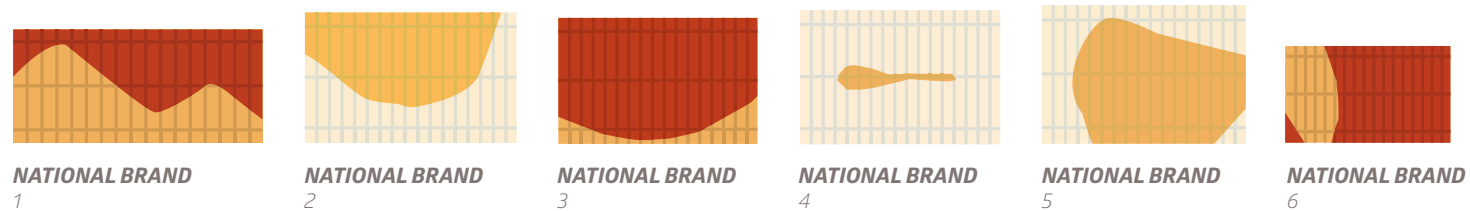
# STANDARD PREMIUM GRILL VS JACKSON GRILLS LUX 700



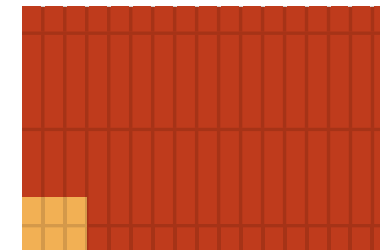
ASSEMBLY TIME 1-3 HOURS DEPENDING ON MAKE AND MODEL



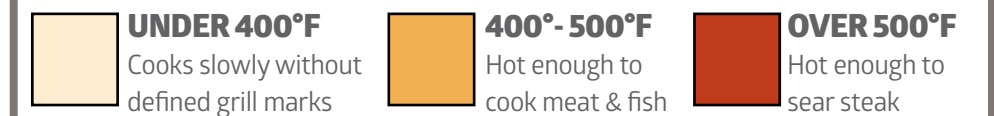
15 MINUTES TO ASSEMBLE



## HEAT ZONES



## GRILL TEMPERATURES AT 10 MINUTES



# DESIGN AND BUILD YOUR CUSTOM OUTDOOR KITCHEN





# SUPREME

850 | 700 | 550

## 304 STAINLESS STEEL

LONGEVITY + DESIGN

## WELDED SEAMS WITH POLISHED ACCENTS

LONGEVITY + DESIGN

## 9MM STAINLESS STEEL COOK GRATES (IDEAL FOR HEAT RETENTION)

LONGEVITY + DESIGN

## DESIGNED TO ALLOW THE GRILL TO ACHIEVE SEARING TEMPERATURES OF 500°F IN 10 MINUTES.

PERFORMANCE

## FLUSH MOUNTED FULL SIZED TRUE INFRARED 1000°F ROTISSERIE BURNER WITH 100% STAINLESS STEEL ROTISSERIE KIT. MOTOR HAS A LIGHT

PERFORMANCE

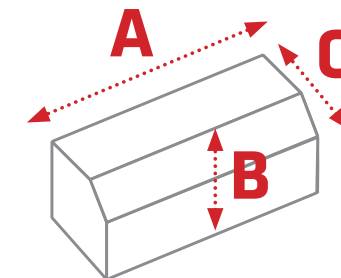
## FULL SIZED WELDED GREASE TRAY

CLEANING/SERVICE

## PINNED BURNERS FOR EASY REMOVAL & MAINTENANCE

CLEANING/SERVICE

If you are looking for the best that Jackson Grills has to offer, take a look at the Supreme line up. This unit is built with the highest grade of stainless steel – absolutely EVERYWHERE (including fasteners and castors). As with all Jackson Grills, the Supreme is designed to impress with evenly distributed searing temperatures reached in under 10 minutes. With recommended care, this unit will last 15+ years, perfect for that outdoor kitchen!



DIMENSIONS	850	700	550
WIDTH (A)	40.75"	33.875"	25.5"
HEIGHT (B)	22"	22"	22"
DEPTH (C)	23"	23"	23"
GRILL SURFACE	610 in <sup>2</sup>	500 in <sup>2</sup>	370 in <sup>2</sup>
TOTAL BTU	67,500	57,000	46,500

CART AVAILABLE FOR MODELS 550/700 (MODEL 700 SHOWN)



[jacksongrills.com/supreme](http://jacksongrills.com/supreme)



[jacksongrills.com/lux](http://jacksongrills.com/lux)

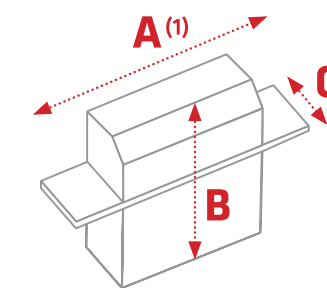
ASSEMBLY TIME: APPROXIMATELY 15 MINUTES

# LUX

700 | 550 | 400



The Lux series is our most popular series. Beautiful stainless steel design throughout. The highest grade material where it counts (firebox, grates etc) and value stainless (SS201) in other areas. Roast a chicken to perfection on the infrared rotisserie (included!). As with all Jackson Grills, the Lux is designed to impress with evenly distributed searing temperatures that are reached in under 10 minutes.



DIMENSIONS	700	550	400
WIDTH (A)	60.5"	52"	45.5"
WIDTH (A1)	44"	36"	29.5"
HEIGHT (B)	47.5"	47.5"	47.5"
DEPTH (C)	23.5"	23.5"	23.5"
GRILL SURFACE	504 in <sup>2</sup>	370 in <sup>2</sup>	268 in <sup>2</sup>
TOTAL BTU	73,500	58,500	35,500

A1 \*SHELVES DOWN

## STAINLESS STEEL BUILD

LONGEVITY + DESIGN

## ALL STAINLESS STEEL FASTENERS AND HARDWARE

LONGEVITY + DESIGN

## WELDED FOR STRUCTURAL STABILITY

LONGEVITY + DESIGN

## FULL SIZE WELDED GREASE TRAY AND CUP

CLEANING/SERVICE

## SPACE SAVING COLLAPSIBLE, WELDED STAINLESS STEEL SIDE SHELVES

LONGEVITY + DESIGN

## TRUE INFRARED 1000°F ROTISSERIE BURNER/STAINLESS STEEL ROTISSERIE KIT

PERFORMANCE

## 8MM STAINLESS STEEL COOKING GRATES (IDEAL FOR HEAT RETENTION)

PERFORMANCE

## INDUSTRIAL STRENGTH CASTERS

LONGEVITY

## SEARING TEMPERATURES 700°F IN 10 MINUTES OR LESS

PERFORMANCE

BUILT-IN AVAILABLE IN 550/700

PERFORMANCE + CLEANING/SERVICE + LONGEVITY + DESIGN

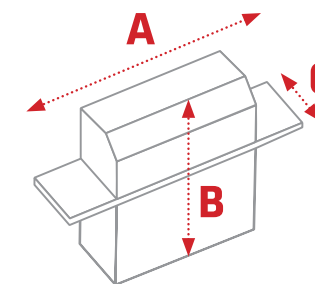


# KEYSTONE

700 | 550 | 400



The Keystone is Jackson Grills' entry level series. It does not compromise on quality materials; using a stainless steel grill head, burner, grates and ALL fasteners. As with all Jackson Grills, these are designed to impress with evenly distributed searing temperatures reached in under 10 minutes. The Keystone series is perfect for the person looking to grill steaks, veggies and fish. Each grill comes stock with a side-searing station that hits temperatures of a 1000°F!



DIMENSIONS	700	550	400
WIDTH (A)	63"	54.75"	47.5"
HEIGHT (B)	47.5"	47.5"	47.5"
DEPTH (C)	22.5"	22.5"	22.5"
GRILL SURFACE	504 in <sup>2</sup>	374 in <sup>2</sup>	268 in <sup>2</sup>
TOTAL BTU*	53,500	42,500	31,500
SIDE SEARING	89 in <sup>2</sup>	89 in <sup>2</sup>	89 in <sup>2</sup>

\*Total BTU includes side searing burner

100% STAINLESS STEEL GRILL HEAD INCLUDING ALL FIREBOX GRILL PARTS

LONGEVITY + DESIGN

POWDER COATED CART WITH ALL STAINLESS STEEL FASTENERS

LONGEVITY + DESIGN

OPTIONAL SPIT-STYLE ROTISSERIE KIT

LONGEVITY + DESIGN

FULL SIZE WELDED EASY ACCESS GREASE TRAY

CLEANING/SERVICE

INDUSTRIAL STRENGTH CASTERS

LONGEVITY + DESIGN

TEMPERATURES OF 500°F IN 10 MINUTES OR LESS

PERFORMANCE

8MM STAINLESS STEEL COOKING GRATES (IDEAL FOR HEAT RETENTION)

LONGEVITY + DESIGN

Standard added feature : Ceramic Side Searing Burner

ASSEMBLY TIME: APPROXIMATELY 45 MINUTES



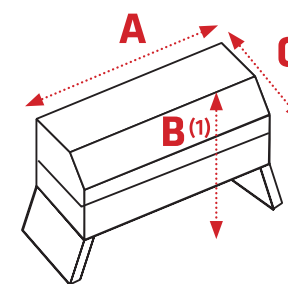
[jacksongrills.com/keystone](http://jacksongrills.com/keystone)



# VERSA

100 | 75 | 50

Our Jackson Grills Versa series are portable grills designed to handle the tough environments that they are taken to. Whether it is camping, boating or beaching, these well-built units show and perform when needed. Built entirely of SS304, these units will last for years.



DIMENSIONS	100	75	50
WIDTH (A)	24"	22.5"	20"
HEIGHT (B)	17"	14.5"	12"
HEIGHT (B1)	13.5"	11.5"	11.5"
DEPTH (C)	17"	15"	13"
GRILL SURFACE	260 in <sup>2</sup>	188 in <sup>2</sup>	155 in <sup>2</sup>
TOTAL BTU	12,500	8,500	10,000
WEIGHT	43lbs	33lbs	22lbs

B1 \*LEGS COLLAPSED



## JVS100

- 304 STAINLESS STEEL
- U-SHAPED BURNER FOR EVEN HEAT GRILLING
- DOUBLE WALLED HOOD WITH HEAT GAUGE
- ELECTRONIC IGNITION
- WARMING SHELF ADDS 76 in<sup>2</sup> GRILLING SPACE
- LEVELING LEGS FOR UNEVEN SURFACES
- WELDED GREASE TRAY



## JVS75

- 304 STAINLESS STEEL
- U-SHAPED BURNER FOR EVEN HEAT GRILLING
- DOUBLE WALLED HOOD WITH HEAT GAUGE
- ELECTRONIC IGNITION
- WELDED GREASE TRAY



## JPG50

- 304 STAINLESS STEEL
- TUBE BURNER FOR SMALLER SURFACE GRILL
- ELECTRONIC IGNITION
- WELDED GREASE TRAY



[jacksongrills.com/versa](http://jacksongrills.com/versa)





# PATIO FIRE

Enjoy a nice evening with friends and family around a campfire. The Jackson Grills Patio Fire provides heat and ambiance for every occasion. The 50,000 BTU burner provides an impressive flame that dances around a realistic ceramic log set. It's portability allows it to accompany you on any excursion you take. When at home set it into one of the Jackson Grills Fire Pit Tables. This combination is a nice feature in the center of your patio sitting area. An optional natural gas conversion kit is available.



*Simply lift the Patio Fire out of the table for on the go enjoyment.*

## ON THE GO FIRE PIT

50,000 BTU burner system with a realistic ceramic log set and embers

Lid cover with handle for portability

Stainless Steel Wind Guard

5' Hose, LP regulator and shut off valve

Operates 10-14 hours on a 20 lb propane tank. (tank sold separately)

Manual light

Patterned pan burner displays a beautiful and realistic fire sequence



# MOUNTAINS WEST FIRE TABLE

The Mountains West Fire Tables are a collection of 3/4" granite topped steel based tables that allow for the Jackson Grill Patio Fire to be placed into them. These tables will be a nice addition

to your sitting area on your deck. Your Jackson Grill Patio Fire has a beautiful home to reside in while not traveling with you on vacation. Choose from 2 sizes .



Removable firepit

Jackson Grills Fire Pit fits these tables (sold separately)

Most 20lb propane tanks fit inside the cabinet

Powder coated or stainless steel base options available

RECTANGLE: W 36" x L 54" x H 21" | SQUARE: W 36" x L 36" x H 25.5"



# OUTDOOR APPLIANCES

Outdoor appliances are designed and built to handle extreme temperatures. Improved heating and cooling design around the compressor systems allow these appliances to endure the outdoors. The materials used, such as SS304 and door bearing seals, add to the longevity.



	15" BEVERAGE CENTRE GLASS DOOR	15" REFRIGERATOR STAINLESS STEEL	24" REFRIGERATOR STAINLESS STEEL
304 GRADE STAINLESS STEEL WITH GLASS DOOR	✓		
304 GRADE STAINLESS STEEL DOOR		✓	✓
ADJUSTABLE TEMPERATURE FROM 35-50°F		✓	✓
THREE FLAT STEEL SHELVES AND ONE BASKET		✓	✓
ADJUSTABLE TEMPERATURE FROM 36 - 64 °F	✓		
BUILT IN HEATER FOR USE DURING WINTER	✓	✓	✓
ELECTRONIC CONTROLLER WITH LCD DISPLAY	✓		
INTERIOR LIGHT	✓	✓	✓
FIVE WAVED SHELVES, THREE FLAT SHELVES, ONE BASKET	✓		
BOTTOM BASKET FOR DISPLAYING WINE BOTTLES OR CANS	✓		
REVERSIBLE DOOR		✓	✓

The ultimate party tool: ready made ice to keep your guests hydrated. Outdoor appliances are designed and built to handle extreme temperatures. Improved heating and cooling design around the compressor systems allow these appliances to endure the outdoors. The materials used, such as SS304 and door bearing seals, add to the longevity.



- 15" OUTDOOR ICE MAKER**
- 304 GRADE STAINLESS STEEL
  - REVERSIBLE DOOR
  - PRODUCES UP TO 44 LBS OF ICE PER DAY
  - BUILT IN INSTALLATION OR FREE STANDING
  - THICK INSULATION TO ALLOW ICE TO BE STORED FOR LONG PERIODS OF TIME

# ACCESSORIES

Jackson Grills offers built in grills, side burners, stainless steel certified outdoor refrigeration appliances, and custom accessories that are easy to install



**25", 30" & 36" DOUBLE DOORS**  
*BIDBLDOORS25, BIDBLDOORS OR BIDBLDOORS36*



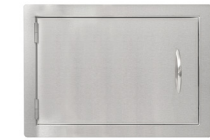
**17" & 24" ACCESS DOORS (HORIZONTAL)**  
*BIDOORS*



**17 X 24 ACCESS DOOR (VERTICAL)**  
*BIDOORSV*



**14 X 20 ACCESS DOOR**  
*BIDOORSSMVT*



**14 X 19 ACCESS DOOR**  
*BIACCESSMID*



**10 X 10 ACCESS DOOR**  
*BIACCESS*



**BUILT IN COCKTAIL CENTRE**  
*COCKTAIL*



**BUILT IN 30" OR 36" COMBO DOOR / DRAWER**  
*BICOMBODOOR + BICOMBODOOR36*



**3 DRAWER SYSTEM**  
*DRAWER3*



**2 DRAWER SYSTEM**  
*DRAWER2*



**PAPER TOWEL HOLDER**  
*PAPERHOLDER*



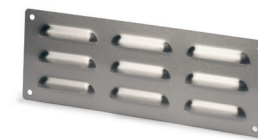
**SINGLE SIDE BURNER**  
*JGSB*



**DOUBLE SIDE BURNER**  
*JGSBDBL*



**SEARING BURNER**  
*JGSBSEAR*



**STAINLESS STEEL VENT**  
*SSVENT*



**BUILT IN TRASH BIN / PROPANE TANK SLIDING DRAWER**  
*TRASHBIN*



**18 X 18 ICE CHEST**  
*ICECHEST*



JC-11

Knock out side shelf included when ordering a side or sear burner for a cart model

# VERSA

# ACCESSORIES



### VERSA SERIES TABLE TOP COVER

- JVS100 Table top cover JH-TTCOVERJVS100
- JVS75 Table top cover JH-TTCOVERJVS75
- JPG50 Table top cover JH-20



### JVS100 PEDESTAL FULL COVER

JPGFLCOVER



### JVS100 PEDESTAL

JPGPED

### GRILL COVERS



JH-304 FITS JLS400 Side shelves folded down



JH-305 FITS JKS400, JKS550, JLS550, JSS550 Side shelves up



JH-306 FITS JKS700, JLS700, JSS700 Side shelves up



### MULTI-PURPOSE VALVES

- JVS100 JVS-VALVE100NG Natural Gas  
JVS-VALVE100LP Propane
- JVS75 JVS-VALVE75-NG Natural Gas  
JVS-VALVE75-LP Propane
- JPG50 JPGVALVE NG/LP comes with 2 interchangeable orifices 1XLP and 1XNG



### VERSA SERIES RAIL MOUNT

for JVS75 and JPG50 VERSA-RAIL

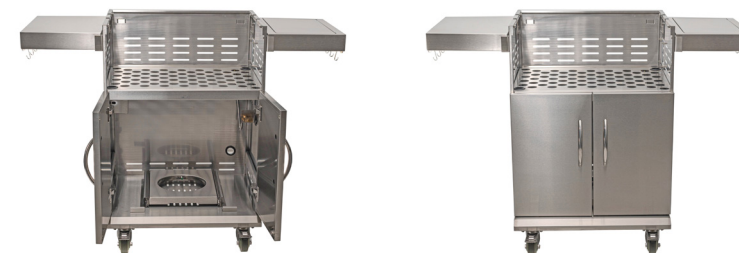


### JVS100 ROTISSERIE KIT



### JSS700-CART

grill head. LP or NG hose available not included.



### JSS550-CART

grill head. LP or NG hose available not included.



### FIRE TABLE COVER

JP-JFPCOFFETABLEC



### FIRE TABLE COVER

JP-JFPTABLEC



### 5' LP QCC HOSE & REGULATOR

Use with the specialty Versa LP valves listed on this page | 15LTC60GRQC | LPHOSE5



### 10' AND 20' RV

Hose c/w fittings for use with any Versa LP specialty valve to connect to a RV low pressure system RVHOSE-10, RVHOSE-20



### NGHOSE

3/8" X 10' Hose with Quick connect Use with any Versa Specialty Valve



### JF70

3/8" X 10' Hose with Quick connect



### JVS100 FOLDING SHELF

JVS-SIDESHELF100



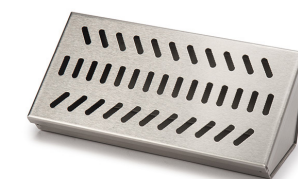
### VERSA SERIES MARINE PLATE

Fits all 3 Jackson Grills portables Adapt to Dickinson, Kuuma, Force Ten and Magma mounts | JPGMBRKT



### PELLET DIFFUSER

Fits all full sized JACKSON GRILLS (not portables)



### SMOKERBOX

Fits all full sized JACKSON GRILLS (not portables)



### CLEANING SOLUTION

101CN Abrasive stainless steel cleaner (not meant for new shiny stainless)

# PARTS & SERVICE



Here at Jackson Grills we back our products with an exceptional parts and service department. Most of our team members have over 10 years experience in this 21 year old company. What that means to you is that you get a knowledgeable and helpful interaction every time you contact us. Our goal is to send parts out to our customers quickly after receiving the order. We are well stocked with parts and we want to make sure that you have as little down time with your grill as possible. We appreciate your choice to buy our products and we look forward to serving you for the lifetime of the grill.

**GOT QUESTIONS?**  
**1-888-287-3333**  
**info@jacksongrills.com**

**PARTS & SERVICE COUNTER ADDRESS:**  
 106-2480 Mt Lehman Road | Abbotsford, BC, Canada  
 Phone: (604) 855-6756

# GRILLSTONES



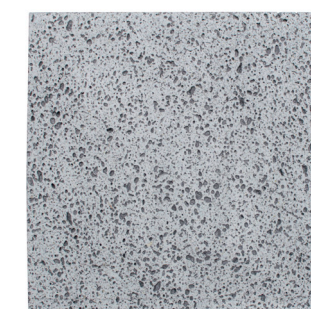
12" x 12" size shown

Made of naturally porous volcanic rock and cut to fit most barbecues, its unique properties allow the Island Grillstone to hold the natural flavor, moisture and nutrients, while preventing barbecue flare-ups that cause charring. The ancient techniques of stone grilling are combined with the luxuries of a modern barbecue to create a healthy, even and clean cooking accessory.

The Island Grillstone allows you to get the most out of your barbecue. No more food marinades or sauces slipping through the grill. Just a pure, beautiful sear and an island experience you can taste, again and again.

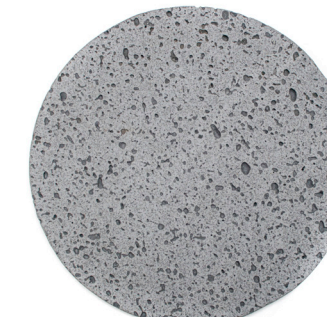
## SHAPES/SIZES

12" x 12"



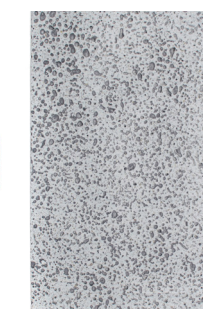
GRILLSTONESQ

14" round



GRILLSTONERD

7" x 12"



GRILLSTONE-VERSA

